

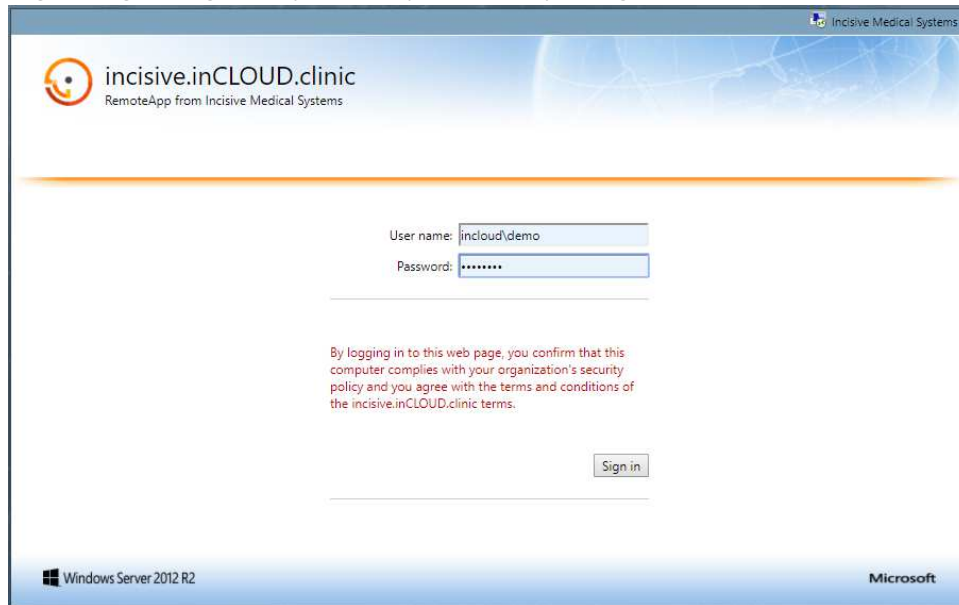
Remote Connect to SPM on inCLOUD.clinic

There are two options to connect to Incisive inCLOUD:

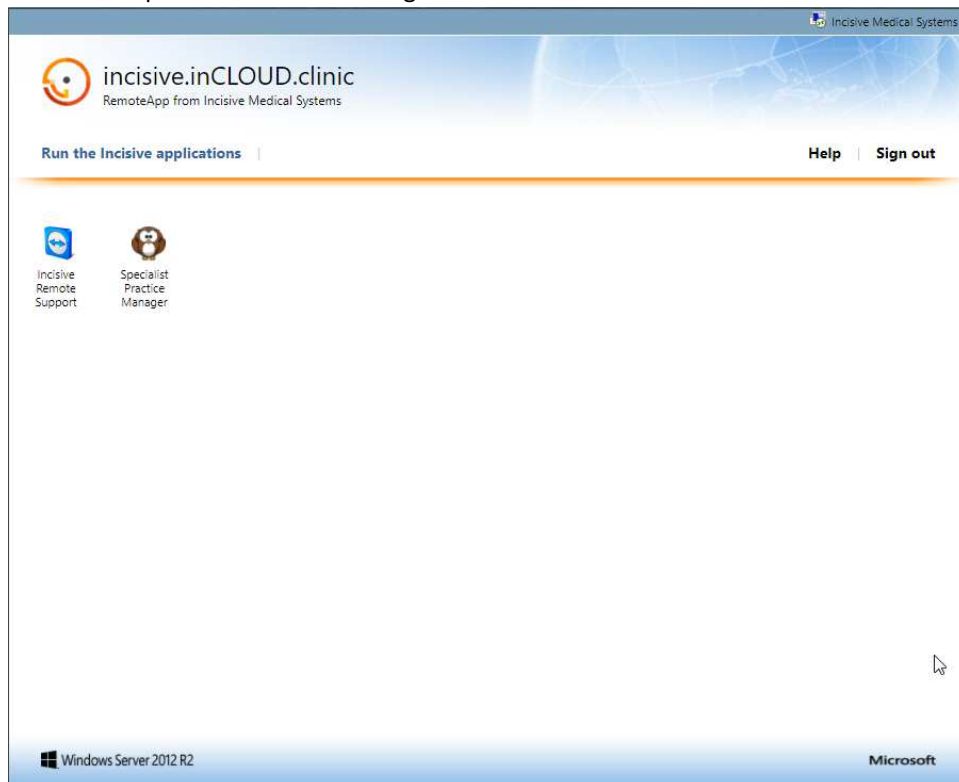
- Remote App file on your Desktop
- Connect through Control Panel > Remote App

Remote App on Desktop

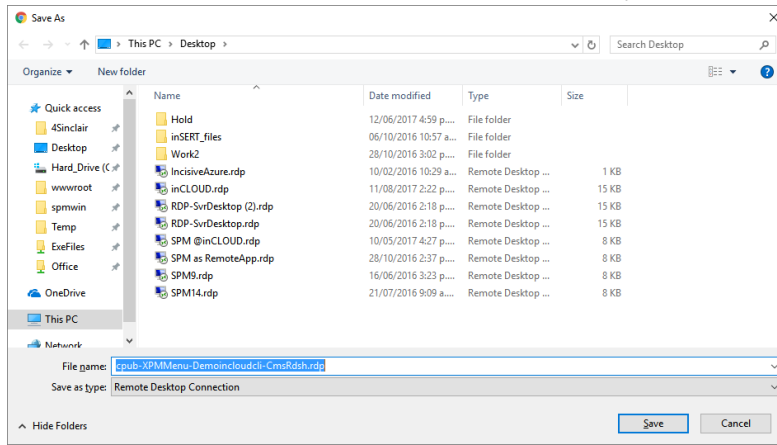
1. In a web browser enter the following URL: <https://incisive.incloud.clinic/rdweb>
2. Login using the login and password provided to you e.g. **inCLOUD\demo01**



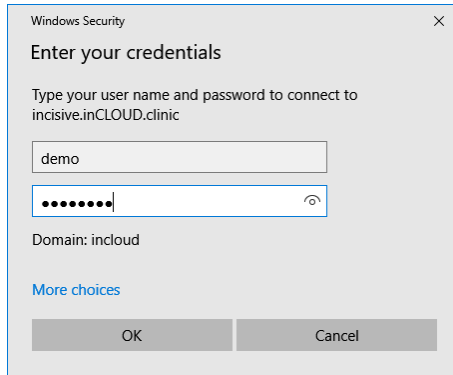
3. Select the 'Specialist Practice Manager' icon



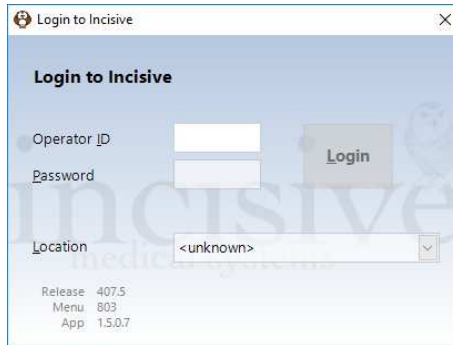
4. Save then Run the downloaded remote connection (.rdp) file



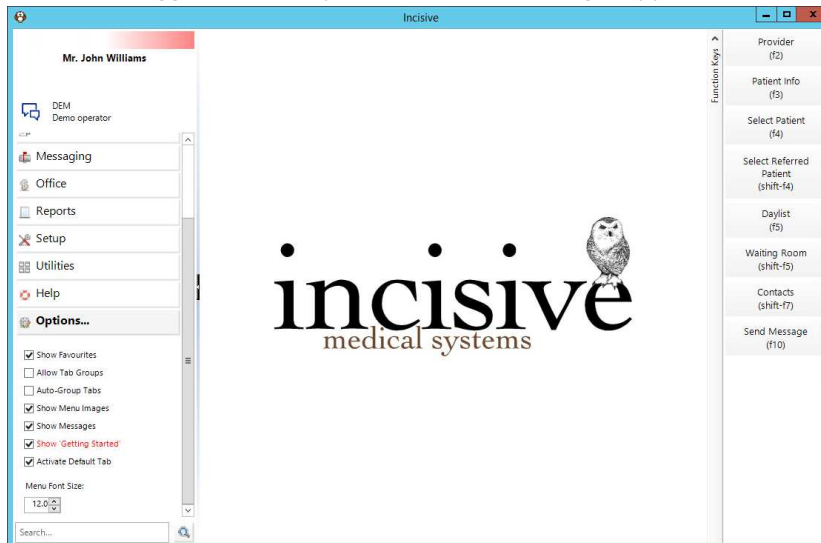
5. Login again using the login and password provided



6. Login to SPM or PHM using the login provided. You can create your own password.



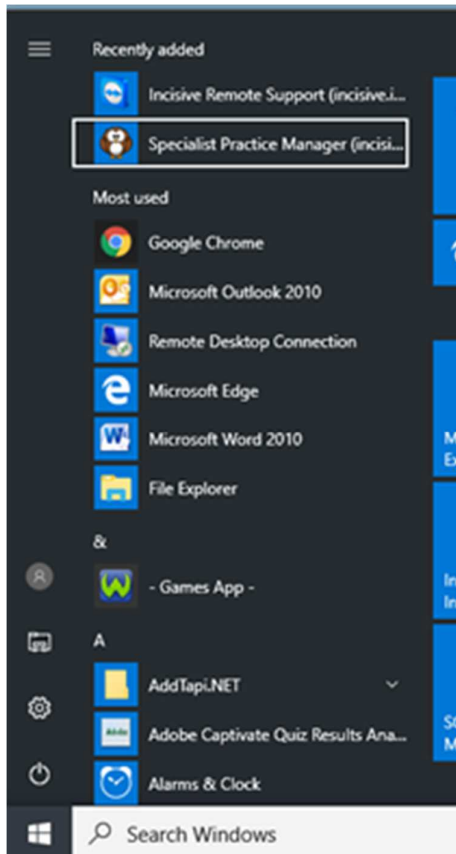
7. You will be logged into the Specialist Practice Manager application.



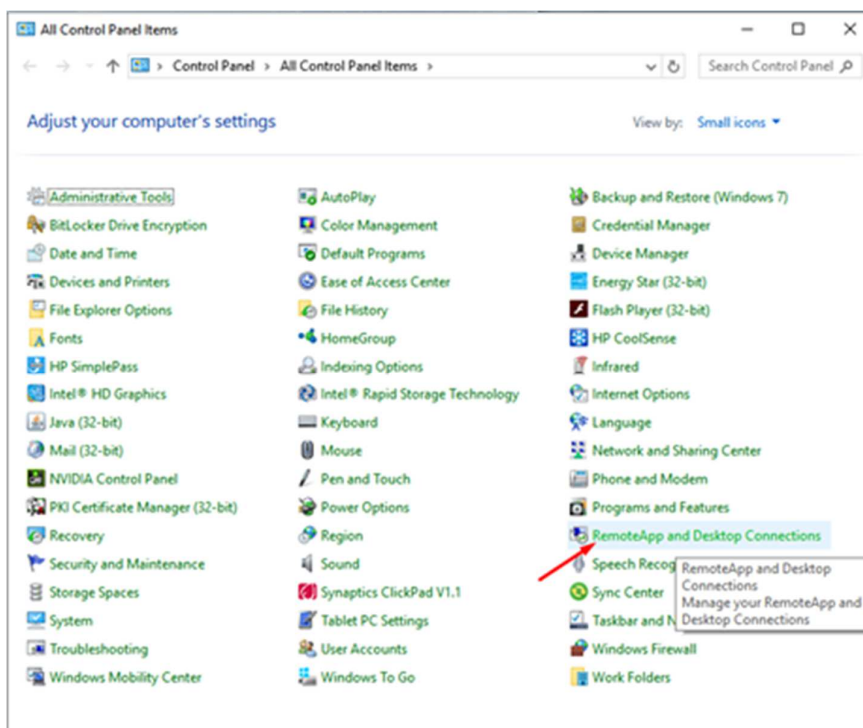
Control Panel > Remote App

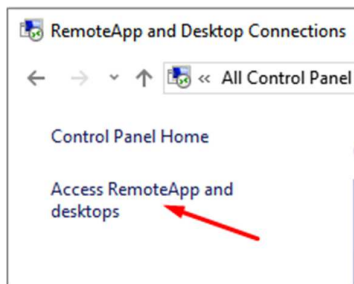
This will be enabled for the login that you are currently logged in as.

To get the application in the Start area or Taskbar you need to do the following steps

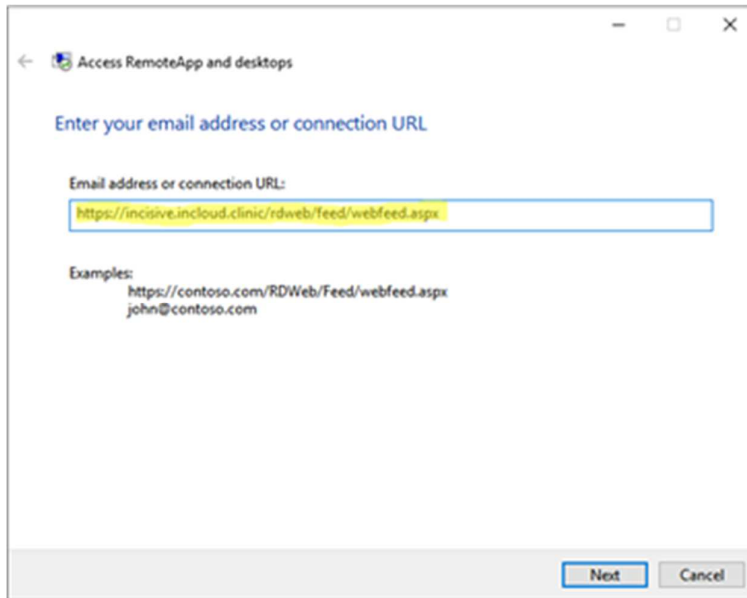


Go to Control Panel and select 'RemoteApp and Desktop Connections'

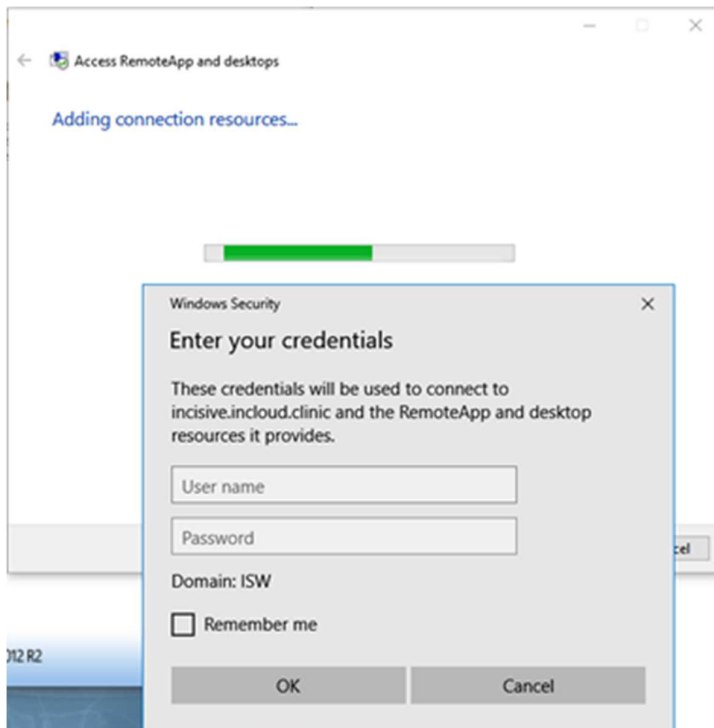




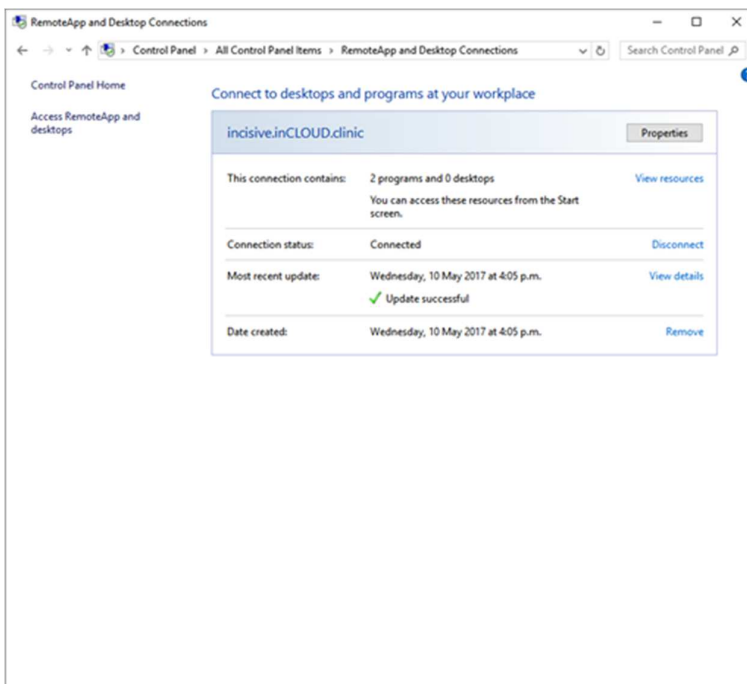
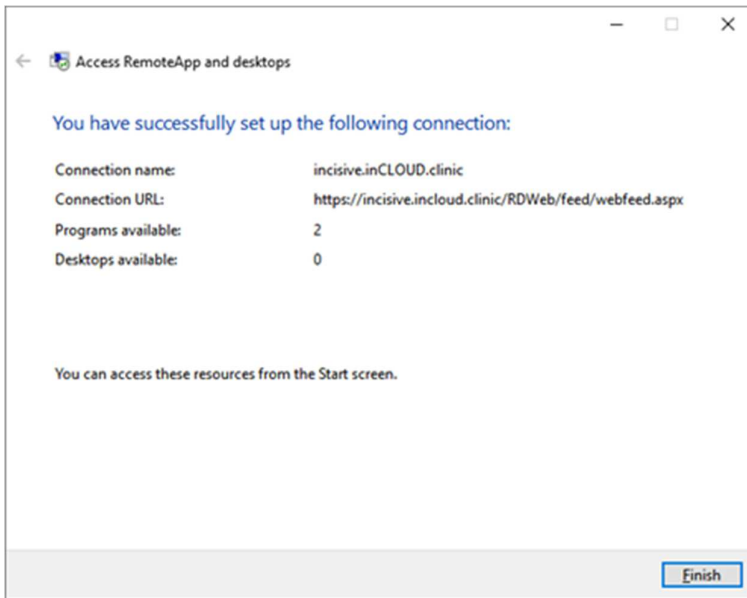
Use this URL <https://incisive.incloud.clinic/rdweb/feed/webfeed.aspx>



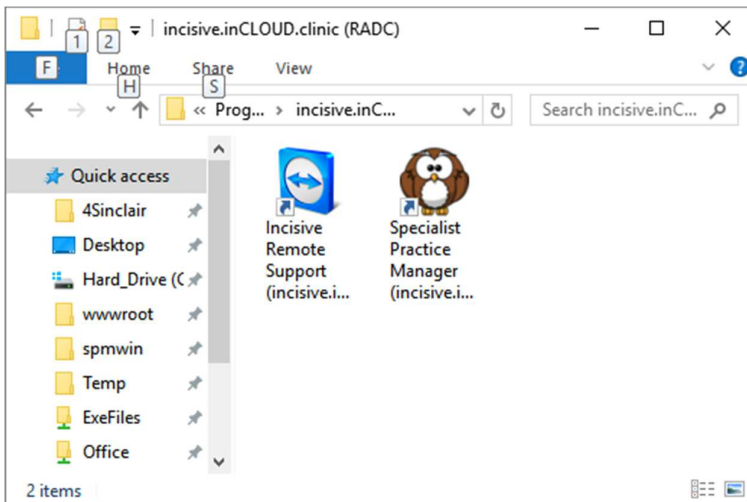
Enter your login details provided by Incisive - **incloud\user?**



Check on 'Remember Me' if you are always going to be using the same inCLOUD login.



Click on 'View Resources'



Right-click and 'Send to Desktop' or 'Pin to Taskbar'.